

## Glass Staircases – What To Look For When Choosing Your Solution



**London, Mar 27, 2019 ([IssueWire.com](http://www.IssueWire.com))** - Glass staircases are increasingly featuring in interiors, breathing light into enclosed hallways and interior spaces. Home owners and Designers are pushing the boundaries in aesthetic design, often at a disadvantage over functionality and compliance with building regulations.

Is there a secret to designing a beautiful glass staircase? One that has all the aesthetic appeal but still conforms with building regulations.

What do you need to consider?

It is a question that Balustrade Components UK get asked a lot. There are three main factors to consider – the design of the staircase, type of project, and compliance to regulations.

Balustrade Components UK works closely with Architects, Staircase Installers, Developers and Contractors, helping their glass staircase projects look aesthetically stunning while ensuring they comply and exceed UK Building Regulations.

## Glass staircase designs

There are two glass staircase designs available – frameless balustrade systems or using a post system.

Increasing significantly in popularity over recent years, frameless systems often have great aesthetic appeal, as it is possible to create minimal, contemporary designs giving traditional interiors a modern twist.

As the glazing panels are held into place with the channel, it maximizes the glazing area of the staircase structure.

Another fixing method for the glass against the main structure is standoff point fixings. These are small components that are often used to complement other internal features e.g. door handles. Available in screw fix or resin fix options, Balustrade Components offers a range of Grade 304 or Grade 316 stainless steel standoffs, for a glass thickness of between 8 and 15mm, in bright or satin polished finishes, with varying standoff distances between 10 and 50mm.

Using a frameless system means the glass is the major factor concerning performance and functionality, so the correct choice of glass is very important. Factors like thermal insulation, load bearings, acoustic properties and fire rating all affect its compliance with regulations.

The second glass staircase design is using a post system. Material selection is key here and popular options include using stainless steel or wooden posts and handrails.

These staircase structures rely more on architectural metal products such as glass clamps, brackets, fasteners, standoff fixings, and other accessories.

Balustrade Components UK always advises incorporating architectural metal fixings into early design concepts, ensuring each fixture is in the correct location offering maximum structural performance. Their experienced team works closely with clients to get the optimum balance of practicality/functionality and aesthetics, ensuring your glass staircase complies with UK Building Regulations and exceeds your client's expectations.

## Project type

Whether you are working on a new build, retrofit or refurbishment glass staircase project, ensuring compliance is a complicated process.

Firstly, integrating glass staircase designs into early design concepts is important for any project type. New build projects sometimes have greater control over the structural plans, and as a result, gives a little more flexibility over the design of the glass staircase. Retrofit or refurbishment projects often require a little more detailing in ensuring compliance, and it means you are designing a staircase to fit within an existing structure.

Balustrade Components UK produces a wide range of glass balustrade components in their manufacturing facilities based in Cannock, Staffordshire. They are the only UK-based manufacturer to produce balustrade fixings for thick glass, where we are able to produce custom handrail brackets, standoffs, glass brackets, and other fixings specifically for glass thicknesses above 25mm.

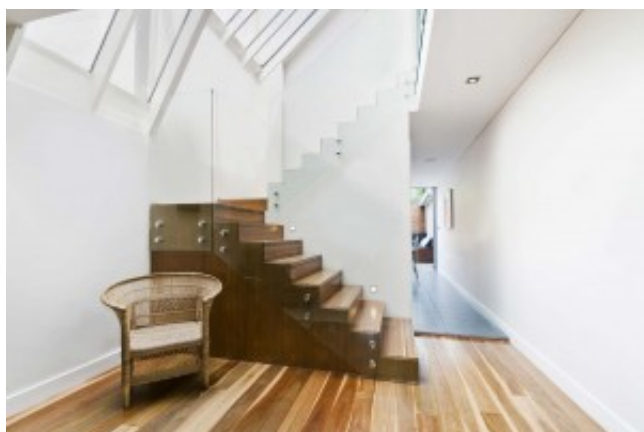
## Compliance with UK Building Regulations

Glazing panels are often in critical locations within staircases and as a result, they have to ensure they are designed and constructed so the risk of breakage and failure is low. Approved Document K sets out criteria and regulations for protection to people against impact, falling and collision with the glass staircase structures.

British Standards 6180:2011 gives guidance and recommendations for the construction of barriers in and around buildings, including factors such as the material selection for the barriers; the various loadings that barriers are meant to withstand; and the application or use of the barriers and how this affects the design.

For your convenience, if you know which glass fixing products you require for your project you can buy directly from our website – [www.balustradecomponents.co.uk](http://www.balustradecomponents.co.uk) Our extensive product range is available to buy and also features an extensive blog for the latest developments, trends and product news.

For further information on the range of high-quality glass balustrade fixings available, or if you require support with your build project, please contact our friendly, competent team on 01543, 624 780, email [sales@balustradecomponents.co.uk](mailto:sales@balustradecomponents.co.uk) or visit our website [www.balustradecomponents.co.uk](http://www.balustradecomponents.co.uk)



## Media Contact

Balustrade

[sales@balustradecomponents.co.uk](mailto:sales@balustradecomponents.co.uk)

Source : Balustrade

See on IssueWire : <https://www.issuewire.com/glass-staircases-what-to-look-for-when-choosing-your-solution-1629168442117622>