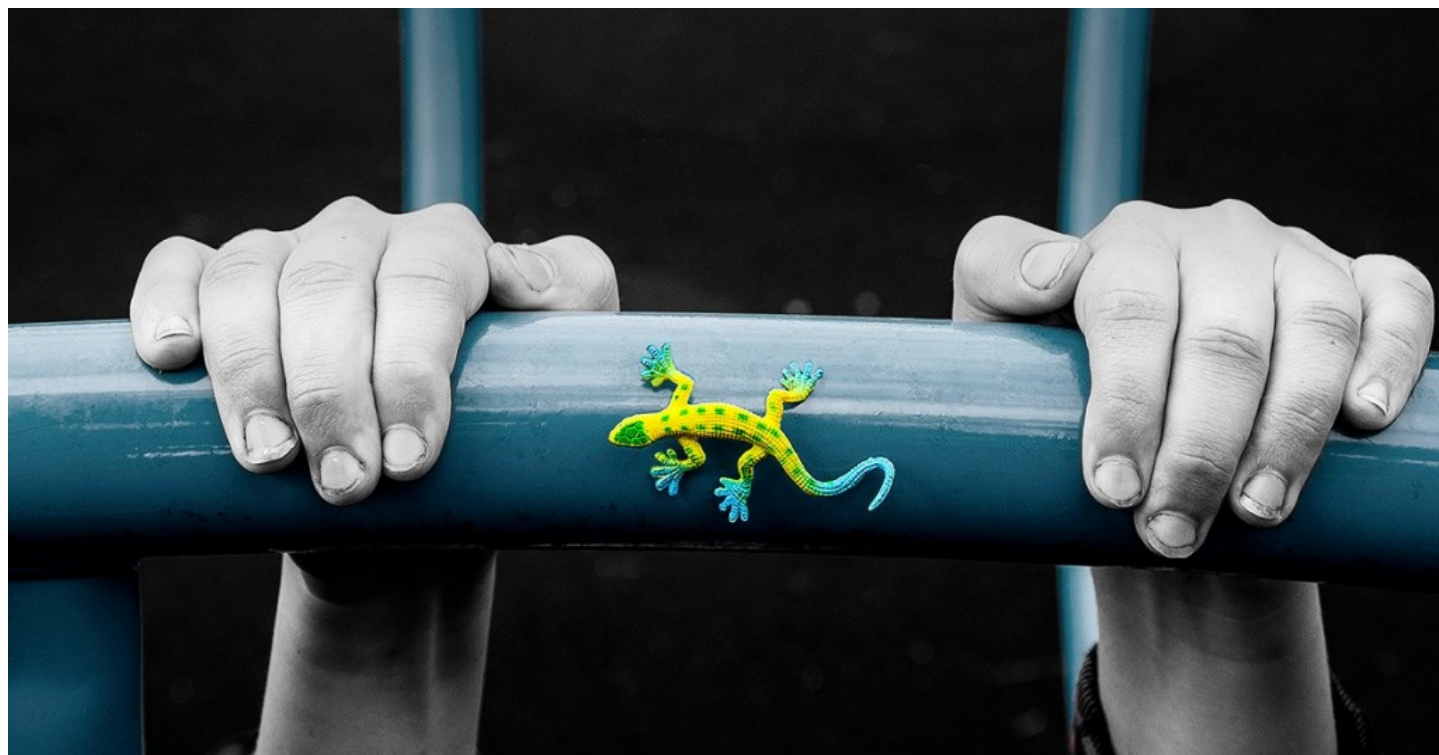


## Know What is ASD Disorder with Lizard Centre



**Melbourne, Apr 29, 2019 ([Issuewire.com](http://Issuewire.com)) - This press release is related to ASD disorder. Know what is ASD disorder and effective autistic programs that deliver lasting improvements in all areas of a child's development.**

Signs and symptoms of ASD disorder are frequently apparent early in life. Kids may show signs within their initial couple of months, similar to the infant who doesn't appear to be keen on individuals around him. Other ASD babies appear to grow typically until 18 to 24 months, so, all in all, they quit learning or lose skills, similar to the toddler who wouldn't like to play.

Early diagnosis and treatment enable young children with [ASD disorder](#) to create to their greatest limit. Kids with ASD frequently learn in manners that are not the same as the standard. They may be incredible with puzzles or computer games, yet the battle with talking, sharing or making companions. They may experience considerable difficulties indicating emotions and understanding the sentiments of others, and have tangible issues and not have any desire to be contacted.

Lizard is one of Australia's leading providers of evidence-based intervention for young children with ASD disorder and related developmental delays. We focus on applying ABA techniques to make individual programs for youngsters with autism that deliver lasting changes in every aspect of a kid's advancement: communication, cognition, social interaction, play, motor skills and independent living skills. Our programs address skill deficits in a fun and rewarding way in every single developmental range, including communication, dialect, play, social skills, motor skills, imitation and cognition, daily living skills, and emotional control.

With several years of proven results in Australia and overseas, at the core of our services and support is

Applied Behavior Analysis, a scientifically validated methodology. Lizard is the biggest ABA early intervention organisation in Australia. The basic goal of treatment is to improve the general capacity of the child to work. Symptoms and practices of autism can consolidate from numerous points of view and fluctuate in severity.

Our services combine various components to give understanding about What is ASD Disorder? Our comprehensive and intensive approach to deal with program design ensures your kid's progress is quickened. Lizard offers result-oriented Early and Intensive Behavioral Intervention programs, which are directed by expert and experienced staff.

One hallmark of ABA is data collection and examination to manage clinical decision-making and individualized tasks. Youngsters who get interventions in light of the principles of ABA have been appearing to make gains in IQ, language, academic performance, and adaptive behaviour, and their outcomes have been essentially better than those of children in receiving other treatments, low-intensity treatments, or no treatment.

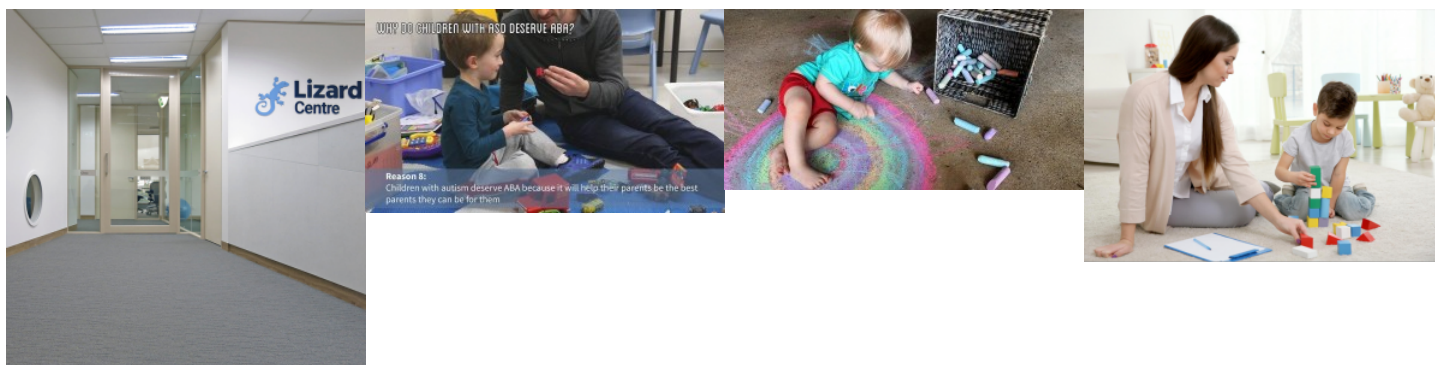
### **About the Company:**

One of Australia's leading providers of evidence-based intervention for young children with ASD disorder and related developmental delays, Lizard provides a comprehensive approach to program design that ensures your child's progress is accelerated. We give the most ideal range of intensive treatment choices to help children create to their maximum potential.

### **Contact details:**

**Address: Lizard Centre**

**Phone Number: 1300 752 617**



### **Media Contact**

The Lizard Centre

reception@lizardcentre.com

Source : The Lizard Centre

See on IssueWire : <https://www.issuewire.com/know-what-is-asd-disorder-with-lizard-centre-1632131982069519>