

Kim G. Sherman, MA, LCPC Announces Its Move to 710 Lee Street, Des Plaines, IL

Des Plaines Wellness New Address



<http://www.desplaineswellness.com/index.html>

[Des Plaines Wellness - intro YouTube](#)

We've Moved Press Release

FOR IMMEDIATE RELEASE

Tel. 847.962.4849

Kim G. Sherman, MA, LCPC Announces Its Move to

710 Lee Street, Des Plaines, IL

Des Plaines, IL, November 4, 2019 – Kim G. Sherman, MA, LCPC announces its move to 701 Lee Street, Des Plaines, IL.

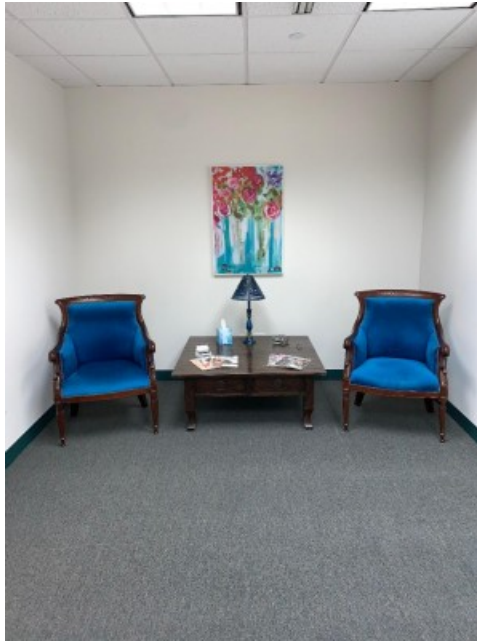
“We have greatly enjoyed all of our years in the NARI Building and we are looking forward to this exciting new phase in growth to serve clients. We have moved into a new, larger office space that will conveniently accommodate Psychotherapy Clients with indoor parking. This move to an upscale, professional office building will enable us to better serve the needs of our clients”, says Kim Sherman, Licensed Clinical Professional Counselor.

Seeking mental health assistance is no longer a taboo topic. The truth is, people need support and understanding to be their best selves. Kim G. Sherman, MA, LCPC offers unconditional positive regard for everyone and supports every individual's right to confidentiality. Clients benefit from Person-Centered Therapy services who need guidance, direction, and support through life transitions as well as mental health issues.

ABOUT KIM G. SHERMAN, MA, LCPC / DES PLAINES WELLNESS

With over a decade of experience working at Leyden Family Services as a Licensed Clinical Professional Counselor, and now in her sixth year in private practice, Kim G. Sherman is experienced, compassionate and highly regarded by her clients, colleagues and surrounding local communities. Adults, Teens, and Couples are all welcome to Des Plaines Wellness to participate in a non-judgmental, non-directive approach to assisting you to find personal solutions.





Media Contact

Kim G. Sherman, MA, LCPC, Des Plaines Wellness

scott@desplaineswellness.com

8479624849

701 LEE ST DES PLAINES IL 60016

Source : Kim G. Sherman, MA, LCPC, Des Plaines Wellness

See on IssueWire : <https://www.issuewire.com/kim-g-sherman-ma-lcpc-announces-its-move-to-710-lee-street-des-plaines-il-1649196792562528>