

Wolterman campaign using AI to predict best sign placement

Computer vision technology paired with public traffic camera data is allowing his team to count cars and predict high traffic areas that are the best locations for placing campaign signs



Cincinnati, Feb 20, 2020 ([IssueWire.com](http://www.IssueWire.com)) - Eric Wolterman's campaign staff is working to develop software that uses artificial intelligence and computer vision to predict traffic patterns that will allow them to effectively place campaign signs. The system will use publicly available traffic cameras via the [Ohio Department of Transportation's API](#). The goal of the system is to pinpoint on a map where the high traffic intersections are within the county limits.

<https://www.youtube.com/watch?v=yzpTep3EytU>

The goal for the software is also to take into account where voters live in the county using [Board of Elections](#) voter data. This information will allow his team to factor in democratic voters in specific neighbors and will attempt to target them with the most efficient sign placement.

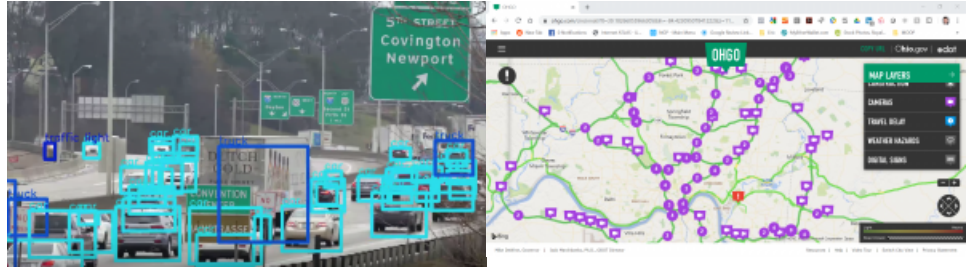
The algorithm will use computer vision to count cars going down roads and through intersections. Storing that information in a database and plotting it on a map. Maximizing sign placement will allow the campaign to reduce sign costs while maximizing visibility and effectiveness.

Eric Wolterman is a candidate in [Hamilton County Ohio](#) and is currently running for county recorder. He is running against two opponents in the March 17th primary.

original

source: <https://www.ericwolterman.com/blog/wolterman-campaign-using-ai-to-predict-best-sign-placement>

ERIC
WOLTERMAN
for COUNTY RECORDER



Media Contact

Eric Wolterman Campaign

info@ericwolterman.com

Source : Eric Wolterman Campaign

[See on IssueWire](#)