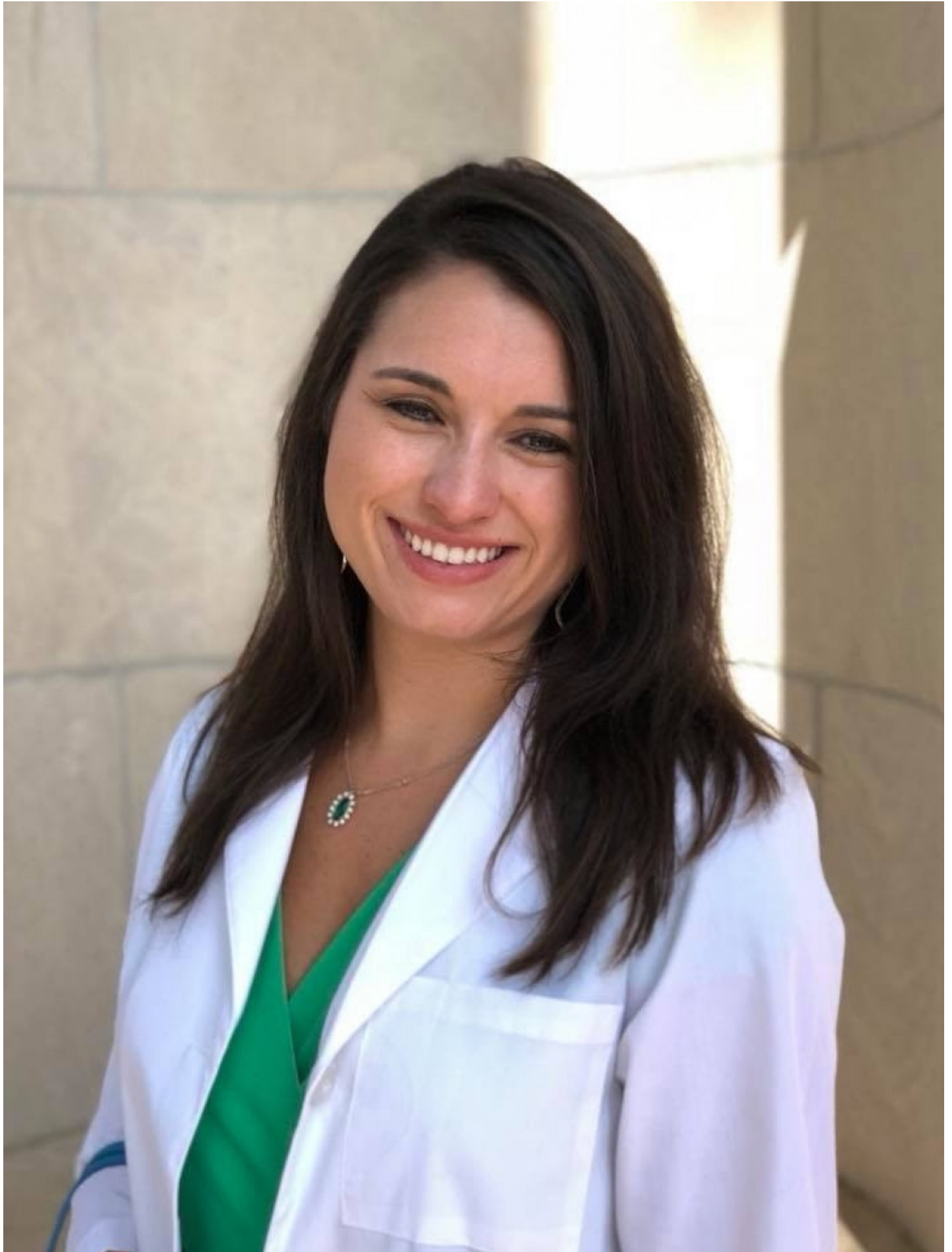


Get to know Adult-Gerontology Acute Care Nurse Practitioner, Lindsey Shirley, who serves patients in Atlanta

Lindsey Shirley, MSN, APRN, AGACNP-BC, Adult-Gerontology Acute Care Nurse Practitioner with Emory University Hospital Midtown



New York City, May 22, 2020 (IssueWire.com) - Specializing in cardiothoracic surgery, Lindsey is an advanced practice registered nurse & a board-certified adult-gerontology acute care nurse practitioner in practice with Emory University Hospital Midtown in Atlanta, Georgia.

Emory University Hospital Midtown is a 511-bed acute care teaching hospital located in the SoNo district of Atlanta, Georgia, United States, and affiliated with Emory Healthcare. Its mission is to improve the health of individuals and communities at home and throughout the world.

Lindsey is a member of the Sigma Theta Tau International Honor Society of Nursing and a Lettie P. Whitehead Foundation scholarship recipient. She holds certifications in Advanced Cardiac Life Support (ACLS) and Basic Life Support (BLS - not intended for postnominal use). During her time at Emory, Lindsey was the Adult-Gerontology Acute Care Speciality Representative for the Emory Graduate Nursing Council.

After earning her Bachelor of Science (BS) degree in Psychology from the University of Georgia in 2016, Lindsey went on to obtain her Bachelor of Science in Nursing (BSN) degree from Emory University - Nell Hodgson Woodruff School of Nursing in 2018, where she made the Dean's List. A year later, she completed her Master of Science in Nursing (MSN) degree from the same educational venue, graduating from Emory's MSN program with a 4.0 GPA.

In February of 2020, she published her first academic article titled "Racial and Socioeconomic Disparities in the Presence of Acute Type A Aortic Dissections" in the Journal for Nurse Practitioners.

An Advanced Practice Registered Nurse (APRN) is a nurse who has a master's, post-master's certificate, or practice-focused doctor of nursing practice degree in one of four specific roles. They are prepared with advanced didactic and clinical education, knowledge, skills, and scope of practice in nursing.

Gerontology is the study of the social, cultural, psychological, cognitive, and biological aspects of aging. A Board-Certified Adult-Gerontology Acute Care Nurse Practitioner (AGACNP-BC) manages patients based on their acuity and needs, not the setting. They care for adolescent, adult, and geriatric patients in a variety of inpatient and outpatient settings.

Learn More about Lindsey Shirley:

Through her online profile, <https://todaysnurse.org/network/index.php?do=/4145977/info/>

Media Contact

Your Health Contact

clientservice@yourhealthcontact.com

Source : Lindsey Shirley, MSN, APRN, AGACNP-BC

[See on IssueWire](#)