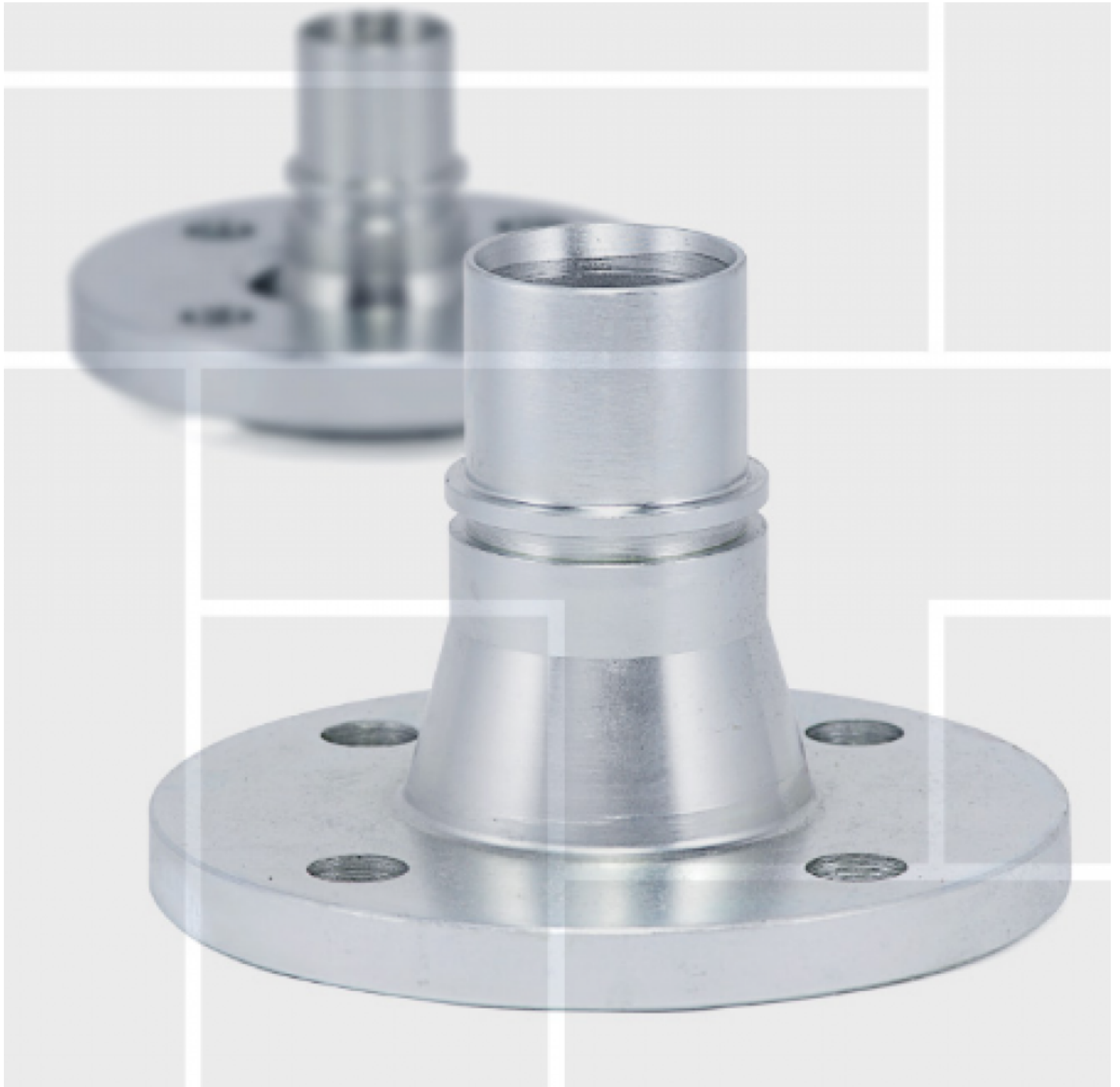


## SME Coupling is Offering Flange Couplings to Connect Rubber, PVC and Thermoplastic Hoses



China, Shanghai, Apr 29, 2021 ([Issuewire.com](https://www.issuewire.com)) - SME Coupling is offering an extensive range of [flange couplings](#) to meet diversified industry needs at competitive prices. SME Coupling engineers and manufacturers are engaged in manufacturing a wide array of industrial hose couplings, flanges, valves, and hardware.

Flange coupling is a coupling used between rotating shafts that consists of flanges. The number and

size of the bolts used for fastening flanges depend upon the power to be transmitted. These couplings are used to make it easier to disconnect the pipes when required while withstanding the operating pressure during operation. These couplings guarantee that there is no interruption of shafts. Some of the couplings have torque limitations, and they can fall flat or disconnect the shafts when a similar limit exceeds past a particular point. These are majorly utilized in pipeline systems that work under a high-pressure atmosphere.

SME Coupling offers a wide range of [flange couplings](#) used in pipeline systems working under a high-pressure atmosphere to connect two pipes or tube ends. All of these couplings are fabricated using excellent quality components adhering to the set market norms. These items are used in various industrial sectors for different purposes. These couplings are sealed with a seal and screwed together with bolts on the circumference of the flange. Also, the flange has a sealing face that is adjusted to the type of sealing that is to be used and usually, a flat seal is applied to it.

Flange coupling with hose tail is available with both a rotating and fixed flange. These are DIN standardized fittings used to go as 1 piece coupling to the rubber hose assembly. The company's range of [flange couplings](#) is used to fitted onto a rubber, PVC, or thermoplastic hose using a hose shank coupling, which is inserted into the hose. The hose shanks are smooth in compliance with EN 14420-2, which makes them suitable for assembly using RK and RKP safety clamps complying with EN 14220-3 / DIN 281. The material used is stainless steel or galvanized steel for the swivel and fixed flange couplings. Polypropylene swivel flange couplings are available on request. All the couplings are available in a range of types and sizes. The company has a team of professional sales representatives to advise customers for choosing appropriate hose fittings and applications. The maintenance of the coupling is easy and it simply requires visual inspections, checking for signs of wear or fatigue, checking and changing lubricant regularly, documenting the maintenance performed on each coupling, and cleaning them regularly.

## About Us

SME coupling a leading industrial supplier for hose couplings, flange joints, and assorted types of industrial-grade pipe fittings and valves. The company is engaged in manufacturing and supplying a wide range of couplings fittings and valves. It has a huge inventory, self-engineering capacity, and exclusive productions for aluminum, stainless steel, and brass alloyed forging and casting fittings and couplings.



## **Media Contact**

SME Couplings

info@wzhaoda.com

+86 (0)21 54800607

Source : SME Couplings

[See on IssueWire](#)