




L-LINE Introduces Customized AMR Logistics Robot: A Practical Solution for SMEs

Enhancing Logistics Efficiency with Cost-Effective, Customized Robotics for Small and Medium-Sized Enterprises



Kumi, Kyeongsangbuk Aug 18, 2024 ([IssueWire.com](https://www.IssueWire.com)) -  Company Name: L-LINE
 Product Name: AMR Logistics Robot with Battery Pack and Power Distribution Unit
 Product Launch Date: August 1, 2025

Product Overview

L-LINE Co., Ltd. is set to transform the logistics industry with the upcoming launch of its AMR Logistics Robot with Battery Pack and Power Distribution Unit on August 1, 2025. Unlike traditional logistics robots designed for large corporations and complexes, L-LINE's new offering is specifically tailored for small and medium-sized enterprises (SMEs), providing a practical and cost-effective solution for businesses with smaller-scale operations.

Customized Design for Practical Application

Traditional logistics robots are often unsuitable for SMEs due to their complexity and high cost. L-LINE's logistics robot, however, is a customized solution that eliminates unnecessary functions, focusing solely on the essential features required by the enterprise. This approach ensures that the robot meets the specific demands of the work environment, such as task size and necessary functions, making it an ideal fit for smaller operations.

Innovative Battery Pack for Integrated Power Management

A key differentiator of the L-LINE logistics robot is its proprietary battery pack, developed in-house to manage integrated power. This battery pack includes a battery management system, power distribution unit, and power shut-off unit, eliminating the need for additional voltage conversion components like DC converters, SMPS, and DC relays. The battery pack can independently output 24V, 19V, 12V, and 5V, providing the precise power needed for various modules such as LiDAR sensors, camera sensors, computers, and communication modules.

Simplified Control System for Efficiency

Existing logistics robots often rely on expensive control systems with complex algorithms to manage multiple robots simultaneously. In contrast, L-LINE's logistics robot uses a simpler control system that assigns specific robots to manage individual sectors. This system is tailored to apply only the necessary features based on the robot's role, streamlining operations and reducing complexity.

Cost Reduction Through Design and Manufacturing Innovation

One of the standout features of L-LINE's logistics robot is its ability to significantly reduce manufacturing costs. The integrated power battery pack simplifies the internal wiring of the robot, allowing for a 20% improvement in productivity and a 30% reduction in manufacturing costs. This innovation not only lowers the cost of introducing robots into SMEs but also increases the overall efficiency of the production process.

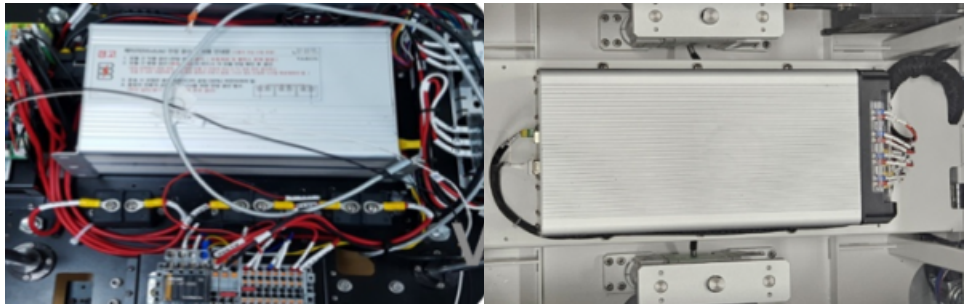
Additionally, the robot's design minimizes the number of parts and bolts required for assembly. The upper and lower bodies of the robot are each constructed using a single welding technique, resulting in fewer components and bolts compared to conventional robots. This design choice enhances the robot's durability, prevents issues like bolt loosening or part detachment due to operational vibrations, and further reduces assembly complexity and time.

Empowering SMEs with Accessible Robotics

While many SMEs recognize the need for logistics robots, financial constraints and concerns about efficiency have made it challenging to adopt such technologies. L-LINE's logistics robot addresses these challenges by offering a cost-effective, practical solution that removes unnecessary functions and leverages the company's proprietary battery technology to lower production costs. This approach makes advanced robotics more accessible to SMEs, enabling them to enhance their logistics operations without incurring prohibitive expenses.

About L-LINE Co., Ltd

Since its foundation in 2014, L-LINE Co., Ltd. has been pioneering next-generation new growth businesses centered on engineering technology. The company is currently driving innovation in the robotics and secondary battery sectors, with a focus on e-mobility, the next-generation growth industry. L-LINE provides customized solutions in line with evolving times and technological advancements, shaping a better future.



Media Contact

L-LINE

Ofiice@l-line.co.kr

Source : L-LINE

[See on IssueWire](#)