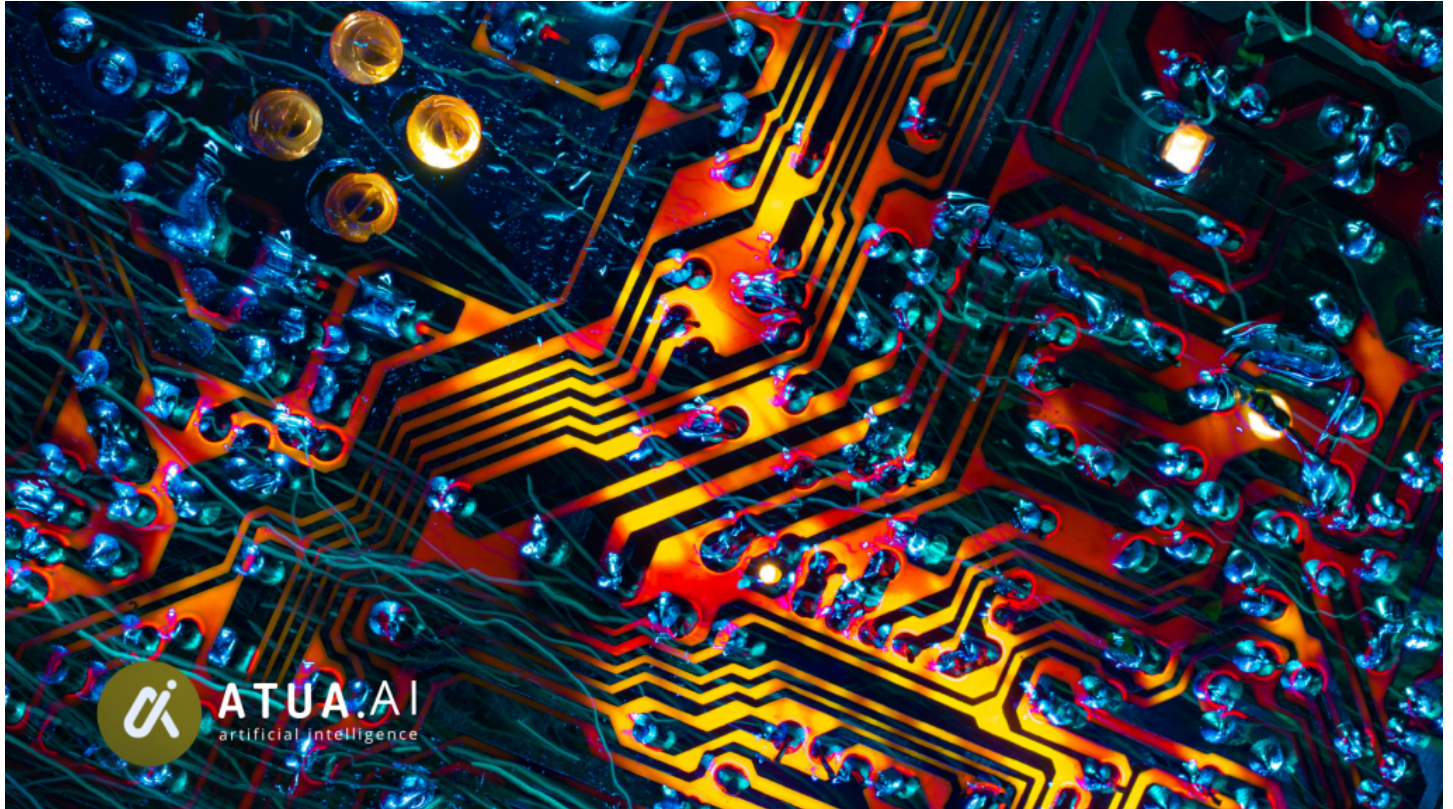


On-Chain AI Platform Atua AI (TUA) Unlocks Scalable Solutions with Ripple XRP Integration

Enhancing decentralized operations, Atua AI (TUA) leverages Ripple XRP to deliver scalable enterprise solutions.



Dubai, United Arab Emirates Jan 30, 2025 ([IssueWire.com](https://www.IssueWire.com)) - On-chain AI platform [Atua AI](#) (TUA) has integrated Ripple's XRP to enhance its scalable enterprise solutions. This integration demonstrates Atua AI's commitment to advancing decentralized technology and delivering efficient transactional frameworks for its users.

Ripple's XRP is known for its speed, cost-efficiency, and scalability, making it an ideal partner for Atua AI's mission to revolutionize on-chain AI operations. By incorporating XRP, the Atua AI platform ensures that enterprises can process transactions seamlessly while leveraging AI-powered tools to drive innovation and operational efficiency.

This collaboration reinforces Atua AI's dedication to building a robust ecosystem where blockchain and AI technologies converge. The integration of XRP enables enterprises to unlock greater scalability and transaction speed, paving the way for streamlined decentralized operations.

As part of its strategic roadmap, Atua AI continues to align with industry leaders like Ripple to redefine blockchain applications. This integration also strengthens Atua AI's vision of delivering world-class AI tools and fostering decentralized innovations to support the evolving needs of businesses.

About Atua AI

Atua AI leverages AI technology to simplify the NFT creation process, empowering artists and creators to easily transform their ideas into digital assets. The platform aims to make NFT creation more accessible, fostering innovation in the digital art space.

Media Contact

KaJ Labs

*****@kajlabs.com

8888701291

4730 University Way NE 104- #175

Source : KaJ Labs

[See on IssueWire](#)